

# Innovative Handling Solutions.

Lifting columns.  
Blenders.  
IBC.

# For Safe Movement Sequences and Processes

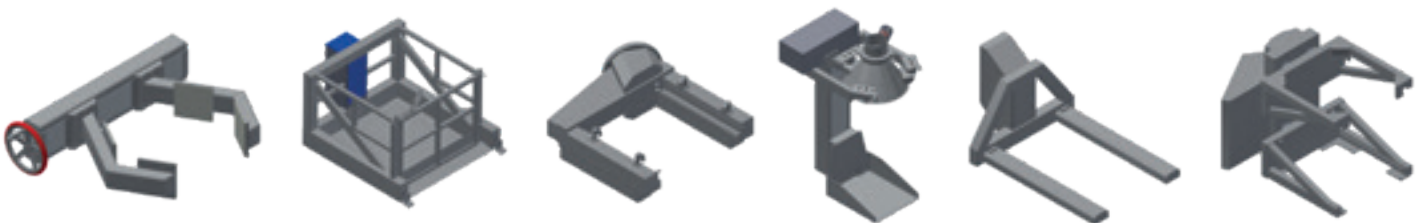
Müller Processing plans, designs and produces handling equipment, intralogistics solutions and GMP washers in Münchenstein (Switzerland) and in Rheinfelden (Germany).

## Lifting columns

Müller lifting columns facilitate the feeding of tablet presses, capsule filling machines, blister machines, and screening machines. In addition to the lifting motion, versions with electrical motors can perform swiveling, inverting and gripping movements. Suitable grippers are available for every application and every container shape – drums, round and square containers or big bags.



- height up to 20 meters throughout several floor levels
- speed variable up to 8m/min
- lifting load standard 150kg to 1500 kg; heavier loads possible
- lifting : electric ; dual motor, dual brake
- inverting : manual or electric
- swivelling : manual or electric
- clamping : manual or electric
- optional ATEX compliance: 2GD IIC / IIIC T4 / T135°C; higher levels possible
- exterior parts stainless steel 1.4301 (AISI 304)
- interior parts carbon steel and prime coated
- all covers brushed Ra ≤ 1.6 microns; other parts glass bead blasted
- all outer visible welds as laid, not flush
- control by safety PLC or optional as relay control
- HMI as touch panel or push buttons
- operating manual; CE certificate; spare parts list; function specification (FS)
- factory acceptance test (FAT)



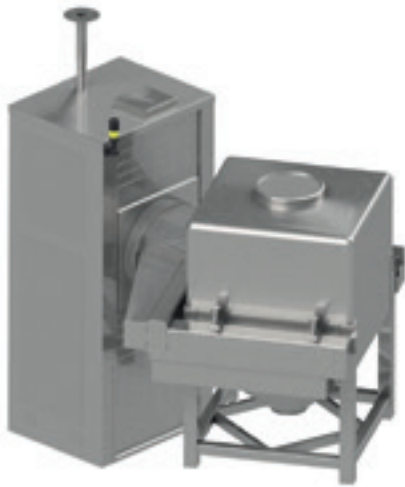
Wide range of pick up units suited to all needs

## YOUR CUSTOMER BENEFITS AT A GLANCE

- customer-specific configuration
- precise repeatability for lifting, inverting and gripper positioning
- suited for heavy loads
- GMP - design

## Blenders

Müller container and drum blenders guarantee the precise and safe carrying of blending containers of varying sizes. The recipe management allows optimal adaptation of the product to be blended. The facilities offer high blending performance for a wide range of powders while preserving substance quality.



### YOUR CUSTOMER BENEFITS AT A GLANCE

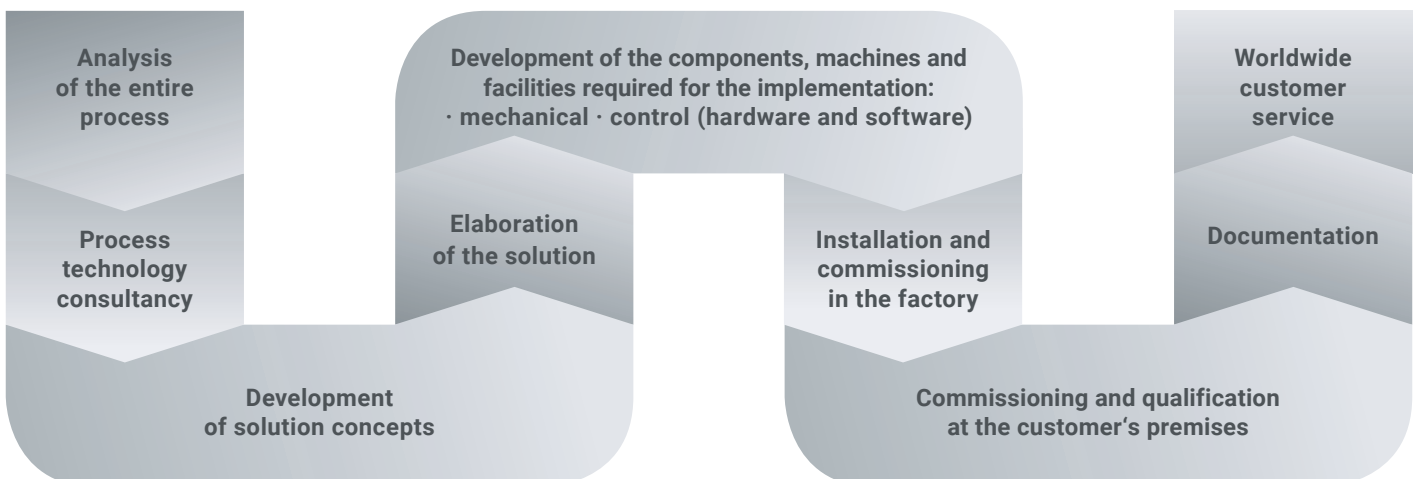
- gentle product mixing
- individual configuration of the blending parameters
- highest validity
- data protocol for batch release
- GMP design

- blending speed up to 20 RPM
- load standard 150kg to 1500 kg; heavier loads possible
- blending electric
- clamping manual or electric
- lifting (optional) electric
- combined lifting and blending possible (Blending column)
- optional ATEX compliance: 2GD IIC / IIIC T4 / T135°C; higher levels possible
- customized access safety elements:
  - safety barriers
  - laser scanner
  - Interlock with Building safety (potential free contact)
- control by safety PLC
- HMI touch panel 12"; optional 15"
- two blending directions -
- Recipe management; user management; batch protocol with print function or storage on USB
- operating manual; CE certificate; spare parts list; function specification (FS)
- factory acceptance test (FAT)
- optional:
  - Industrial PC solution
  - Audit trail function
  - Data export to SCADA system
  - HDS / SDS
  - IQ/OQ



Wide range of IBCs

### CUSTOMER SUPPORT BY MÜLLER PROCESSING THROUGHOUT THE OVERALL FACILITY IMPLEMENTATION PROCESS



## Maintenance, service and retrofit

Customers are provided with regular and comprehensive service for all facilities. This secures the investment costs and allows highest possible facility availability.

Experienced service technicians, who are regularly trained directly at our facilities, ensure the high service availability. All work is subject to ISO 9001.

### Worldwide factory service offer

- assembly, installation and commissioning
- briefing and training of the customer's operating and technical staff
- IQ / OQ
- contact person for the selection, ordering and delivery of spare parts
- maintenance / repair / modernization
- maintenance contracts
- renovation, modification and extension of existing facilities, also third-party

### YOUR CUSTOMER BENEFITS AT A GLANCE

- highest possible plant availability
- avoidance of supply bottlenecks
- investment value retention
- maintaining the security level of the installations
- transparent costs



## Müller Group. From Packaging to Processing.



UN-approved packaging made of mild steel, stainless steel and fibre.



Plastic packaging and technical moldings.

### Müller AG Processing

Tramstrasse 20  
4142 Münchenstein  
Switzerland  
T +41 61 416 12 12  
F +41 61 416 12 13  
processing@mueller-group.com



Storage, transport and process containers out of stainless steel.



Integrated handling systems, GMP washers and intralogistic systems.